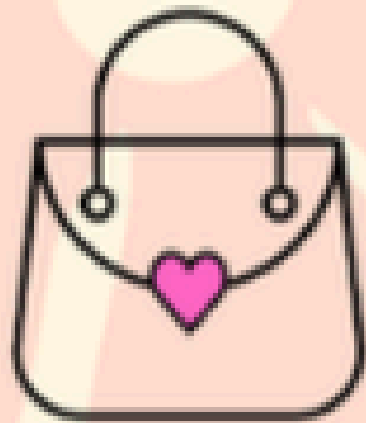


WHY
W2W



women 2 women
The Power of the Purse

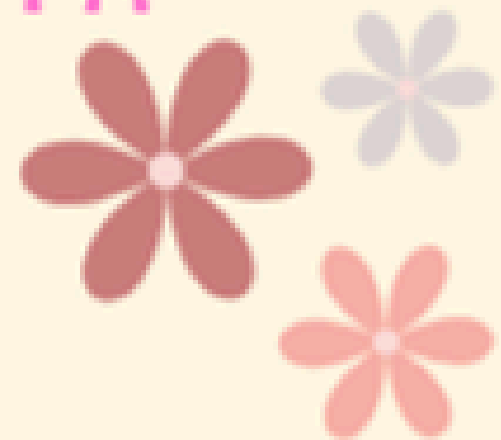
2026 CIRCLE OF SISTERS

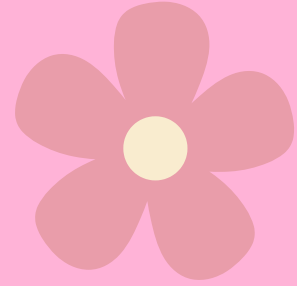
14th annual luncheon

SATURDAY, MAY 16TH @ 11 AM - 2 PM

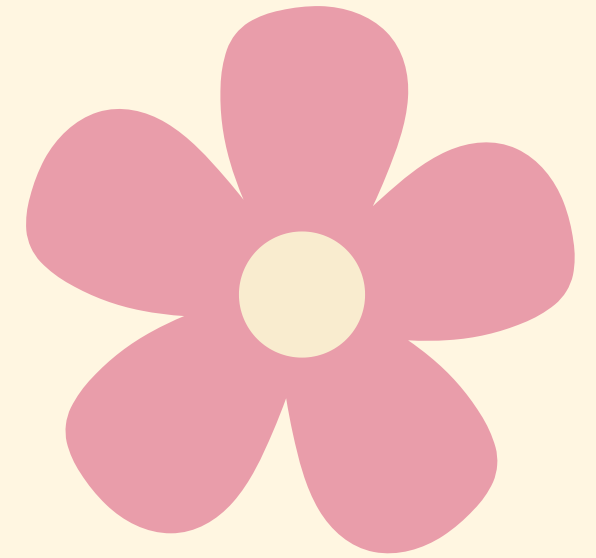
@ UNC CAMPUS COMMONS

celebrating sisterhood



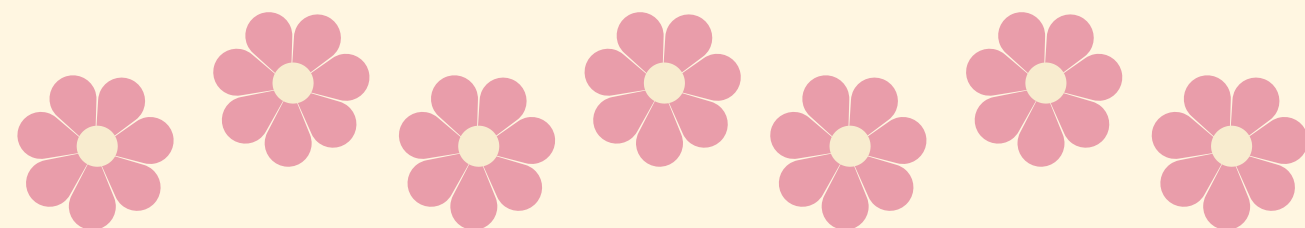


THANK YOU TO ALL THE BUSINESSES, INDIVIDUALS, AND ORGANIZATIONS
 THAT HAVE GENEROUSLY SUPPORTED WOMEN 2 WOMEN
 AND HAVE JOINED US TODAY TO THE CIRCLE OF SISTERS CELEBRATION!



women 2 women

The Power of the Purse



Women 2 Women Board of Directors

BECKIE CROISSANT, PRESIDENT

DESIREE CLARK, VICE-PRESIDENT

LIZ CLARK, TREASURER

ELESE FINN, PROGRAM COMMITTEE

DONDI GESICK, MARKETING/FUNDRAISERS

LAURIS LAUE, DIRECTOR

KRISTIN ARNOLD

JANE FISHER

KRISTI RANKIN

HEATHER BERAN

CHRIS HYLAND

KAREN WAINSCOT

DANIELLE PROCHAZKA

ROSLYN WIKOFF

Imagine a young student with the talent and drive to succeed, but without the money to pay for lab supplies or textbooks...

A single working mother who has secured safe housing, yet cannot afford the required deposit...

Or a senior woman who needs new glasses to maintain her “lifeline” of part-time employment...

Women like these are at the heart of Women2Women. We are a community of women committed to providing one-time, immediate financial assistance, a true “hand-up”, to women and families across Weld County.

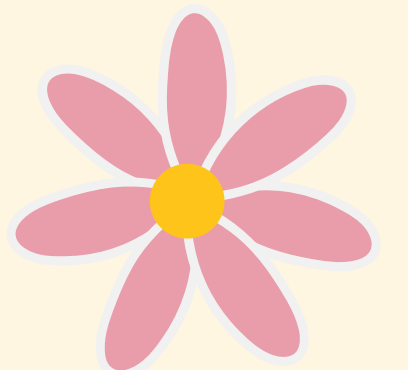
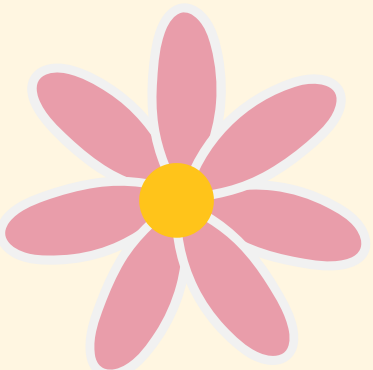
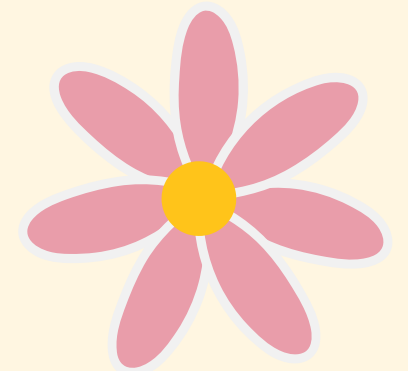
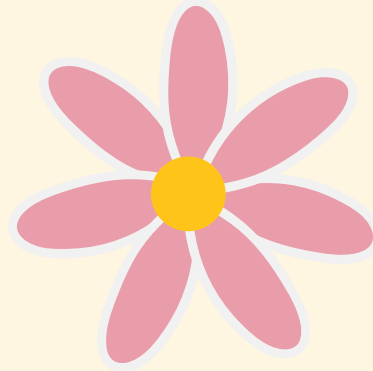
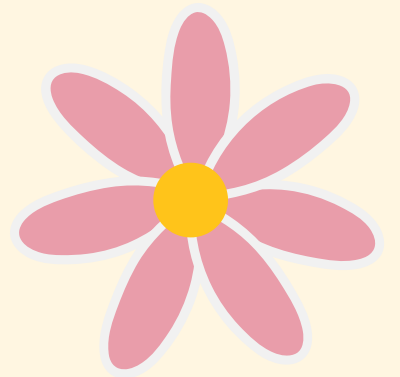
We work through a trusted referral network of local nonprofit partners, offering a funding solution for urgent needs that might otherwise go unmet. Most approved requests are fulfilled within 24 to 48 hours, with payments made directly to service providers, ensuring that every dollar stays within and supports our Weld County community.

Most importantly, the donations we receive today go directly toward helping women in crisis. It is the support of this community, and people like you, that makes this work possible and allows us to continue changing lives every day.

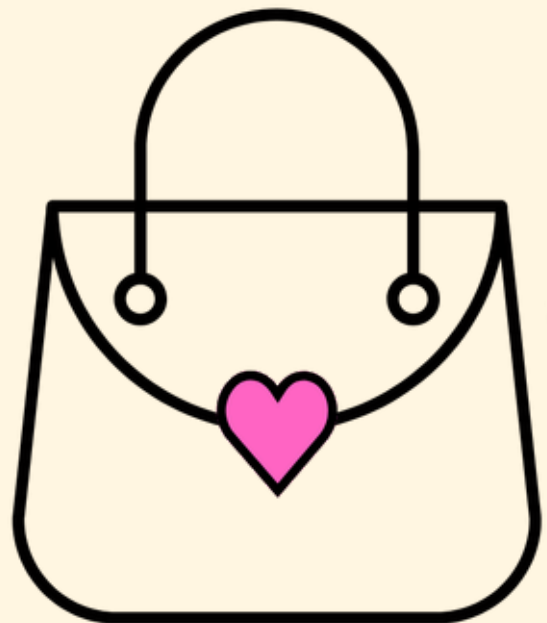
Thank you for being part of that impact.

We thank you!

Beckie Croissant, W2W President

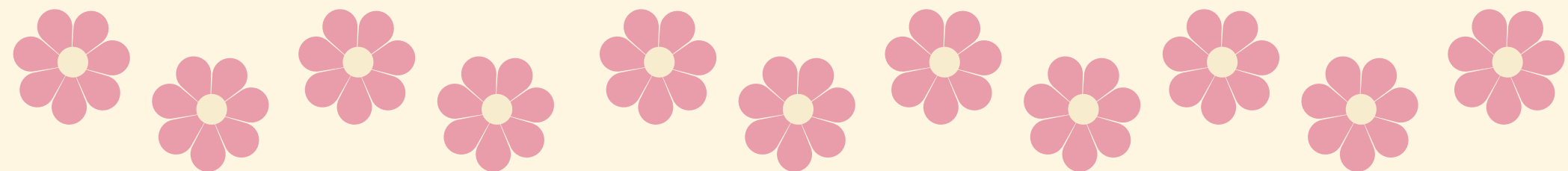


OUR FOUNDER: KAY BRODERIUS



women 2 women

The Power of the Purse



CIRCLE OF SISTERS CELEBRATION

Formal Program Agenda

Welcome

Recognition of Sponsors

Other Recognitions and Announcements

Paddle Game

Kay Broderius “Hand Up” Award

- Poem: Nancy O’Brian
- Recipient: Phil White, Phil’s Pro Auto Service

Boots on the Ground Award

- Recipient: Mary Jo Vasquez, The Housing Navigation Center

Pink Purse Award

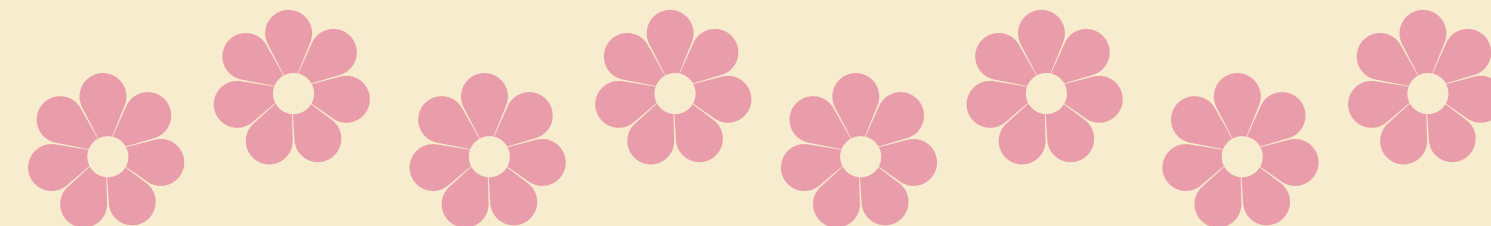
- Recipient: Verniece Thomas, Park Avenue Realty

180 Prize Drawing and Balloon Pop Recognition

Closing Remarks

Before the formal program begins, you can enjoy purchasing mystery bags and paddles for our paddle game, visiting the cash bar, bidding on silent auction items, and making memories at our photo booth. Bring your loose change to add to our *Be “the change” in a Woman’s Life* boxes.

Throughout the program, you will hear from some of our guests about *WHY* they support Women2Women



KAY BRODERIUS "HAND UP" AWARD

2026 Recipient: Phil White

Since 2012, Phil White has been far more than a sponsor to Women to Women—he has been a steadfast partner, advocate, and champion for the women we serve. Through Phil's Auto Pro Service, he has provided trusted, reliable mechanical support to more than 150 women facing urgent and often overwhelming auto needs. For many of these women, a safe and functioning vehicle is essential to maintaining employment, caring for their families, and regaining stability. Phil understands this deeply, and his generosity has helped remove critical barriers at moments when it mattered most—totaling more than \$64,000 in services.

Phil's impact extends well beyond the shop. As a longtime sponsor of the Circle of Sisters celebration, he has consistently shown up for our community, offering not only financial support but also encouragement and belief in our mission. His ongoing commitment reflects a genuine dedication to empowering women and strengthening the Weld County community.

We are incredibly grateful for Phil's compassion, integrity, and unwavering support over the years. His partnership has made a lasting difference in the lives of so many, and his example continues to inspire all of us.



Phil's Pro Auto Service

BOOTS ON THE GROUND AWARD

2026 Recipient: Mary Jo Vasquez



Mary Jo Vasquez serves as the Bilingual Housing Coordinator for the Weld County Housing Navigation Center with United Way. She brings over 19 years of experience in the nonprofit sector, supporting individuals impacted by domestic violence, human trafficking, child abuse, homelessness, addiction, mental health challenges, teen dating violence, and elder abuse. As a bilingual and bicultural professional, Mary Jo is skilled in crisis intervention, advocacy, and evidence-based practices including trauma-informed, client-centered care, harm reduction, and motivational interviewing. She has effectively applied these approaches in her work with vulnerable populations, particularly those experiencing homelessness, mental health concerns, and substance use disorders. Mary Jo has been with the Housing Navigation Center for four and a half years.

Mary Jo was nominated for this award for many reasons, but most notably, her heart for service. Her nominator shared, “As a board member of Women2Women, I review a large number of applications within a short, one-month period. Each year, I am consistently impressed by the level of commitment demonstrated by the agents and agencies who submit nominations. What impressed me most was her unwavering dedication to serving every person she assists. Her dedication, diligence, compassion, and tireless efforts to achieve the best possible outcomes set her apart.”

The Housing Navigation Center

PINK PURSE AWARD

2026 Recipient: Verniece Thomas

Verniece Thomas has been a dedicated and influential leader within Women to Women, serving as a board member from 2011 to 2022 and leaving a lasting imprint on the organization. During her nearly decade of service, she provided thoughtful leadership, steady guidance, and a deep commitment to the mission, helping shape Women to Women into the strong and impactful organization it is today. Even after concluding her board service, Verniece's support has never wavered. Through her business, Park Avenue Realty, she continues to be a generous donor and sponsor, contributing to fundraising efforts, supporting events like Circle of Sisters through Greeley Lifestyle Magazine advertising, and frequently donating silent auction items—demonstrating her generosity in both visible and behind-the-scenes ways.

Her leadership was especially impactful during her presidency from 2019 to 2020, a time marked by significant challenges and uncertainty. As her nominator shared, “For me, what really makes Verniece stand out was the strength and leadership she exhibited while leading our organization through some difficult times during her 2019–2020 Presidency, including the challenges presented by COVID and navigating our board through difficult discussions regarding our foundation account.” During this period, Verniece led with resilience, grace, and integrity, ensuring the organization remained grounded and forward-focused. We are deeply grateful for her enduring commitment, generosity, and the leadership she has shared so selflessly—her impact continues to inspire all who work alongside her.



Park Avenue Realty

100 x \$100 Annual Campaign

In 2009, Women2Women was founded when its members each invited 10 friends to donate \$100—raising \$11,000 in just 37 days. That spirit of collective giving continues today, with supporters reaching out during the final 100 days of each year.

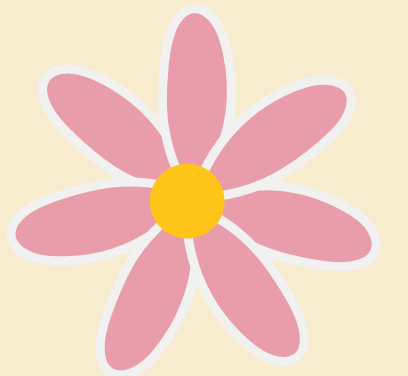
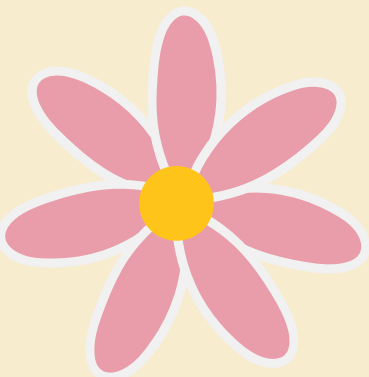
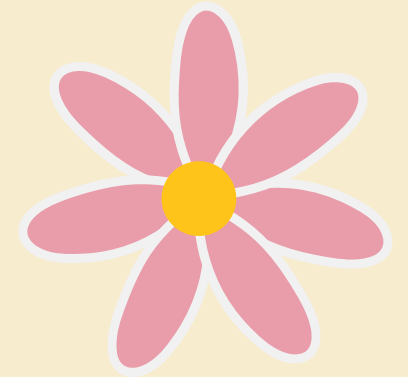
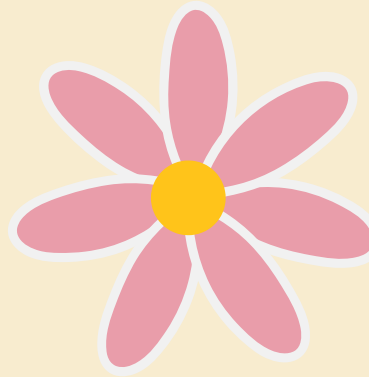
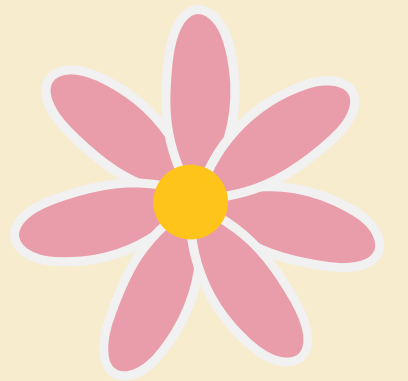
Thanks to your generosity, Women2Women has raised over \$1.6 million and supported more than 1,300 women in Weld County. We are deeply grateful for your contributions, which provide critical one-time financial assistance to women in our community.

Your donations are also directed to local vendors who deliver essential, direct services to the women we serve. As the need in Weld County continues to grow, investments from community members like you are vital in helping us meet that demand. By supporting women in crisis, Women2Women creates a ripple effect that positively impacts hundreds of lives across our community.

Thank you again for your continued support.



women 2 women
The Power of the Purse



Thanks to Our Sponsors!

Platinum

CHFA
Phil's Pro Auto Service
Resource Center



women 2 women

The Power of the Purse

Gold

Allo
Alpine Veterinary Hospital
Bank of Colorado
Brad Laue - Winters, Hughes & Laue LLC
Leading Edge Financial Group
Park Avenue Realty
UC Health
Weld Community Credit Union

Silver

Bob Behrends Roofing
Bentley Mission Critical
Christ Community Church
Flood & Peterson
FMS Bank
Greeley Interfaith Association
McCreery and Sun
Roney Law
Thompson Advanced Dentistry
Warm Hugs

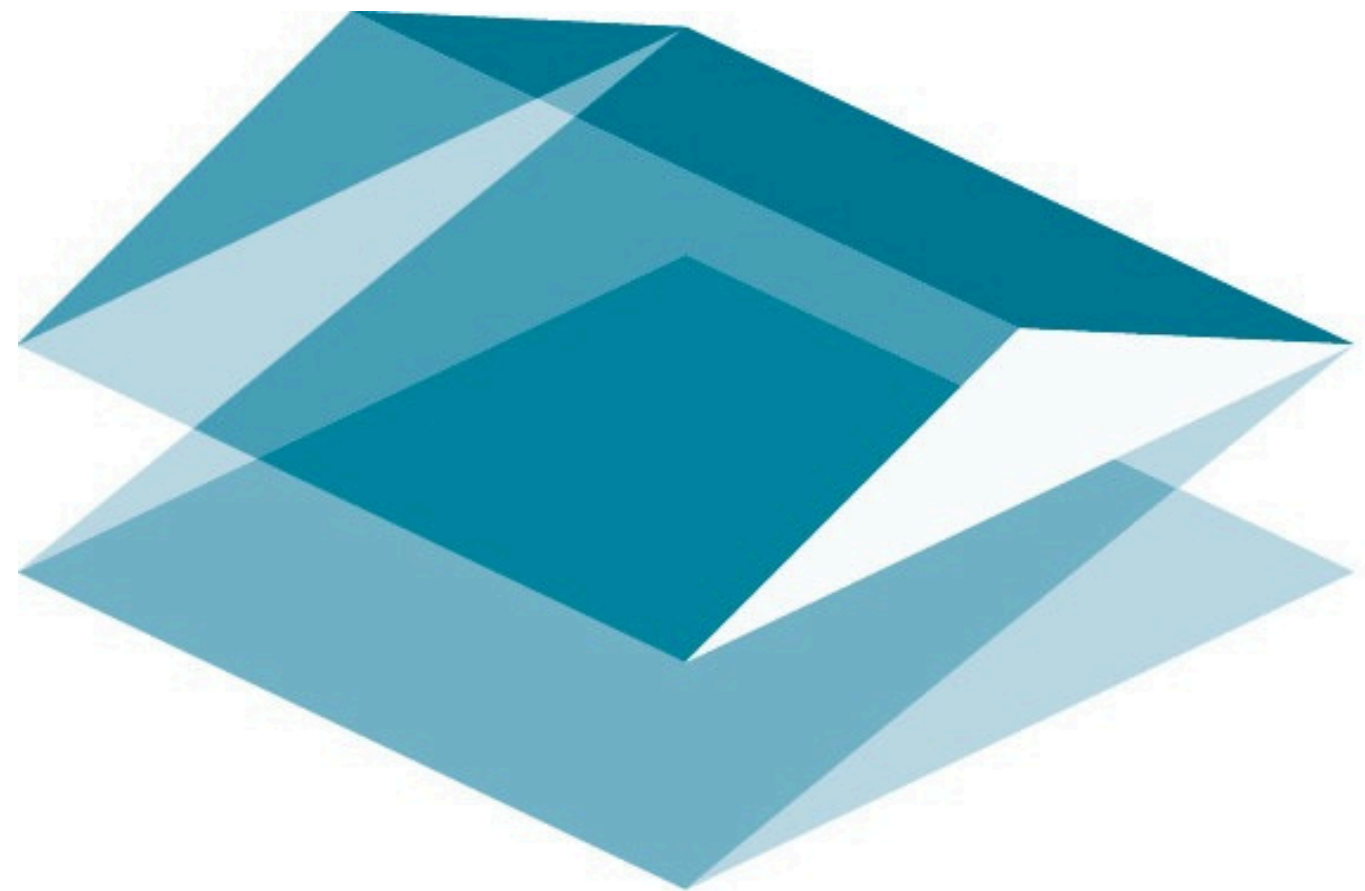
**WHY
W2W**



women 2 women

The Power of the Purse

**Platinum
Sponsors**



chfa®

Platinum Sponsor

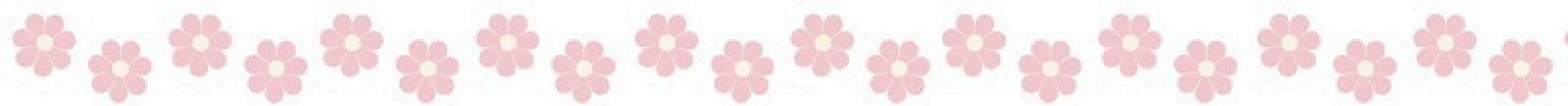


Phil's

PRO AUTO

service

Platinum Sponsor



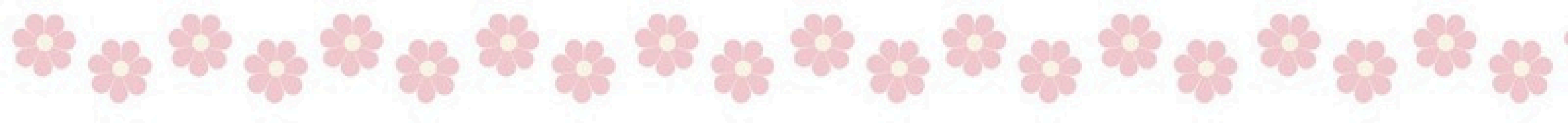
Our Why...

By Supporting Women 2 Women we can help ensure that the gift of assistance will be there for the women in our community who may require it. For 40 years our community has supported us and in turn, we need to make sure we are returning that support when needed. In addition, as an automotive service provider, we recognize that vehicle complexity has increased the divide of what is understandable regarding vehicle service needs and the actual service needs themselves.

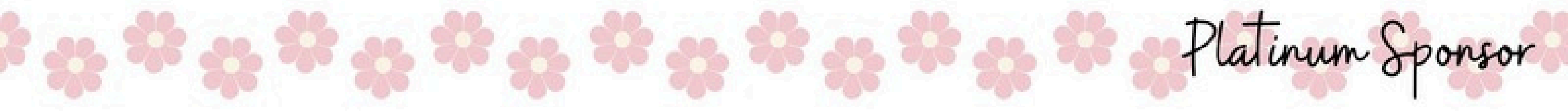
When a woman finds herself in a situation of need related to her primary mode of transportation, we want to make sure she gets correct and valuable information regarding that need. Working with Women 2 Women referrals gives us the opportunity to do just that. And in most cases we can leverage the funds provided by Women 2 Women to increase the benefits they have received.



Platinum Sponsor



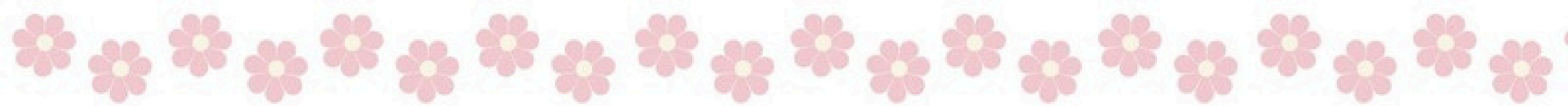
Resource Center



Platinum Sponsor



Platinum Sponsor



Our Why...

The Resource Center for Pregnancy and STD Support is a local non-profit that exists to support women who experience unexpected pregnancies. Many of our clients are experiencing challenges such as lack of housing or finances and may be in unhealthy or unsafe relationships. Women 2 Women has been a valuable partner for women in need of resources to get back on their feet. We have always appreciated and respected the integrity of Women 2 Women and the careful and consistent vetting process they provide before distributing funds. This is an organization who values women and strives to help them succeed while ensuring careful and deliberate fiscal accountability. It is an honor to support the work they do in Weld County.



Platinum Sponsor

**WHY
W2W**



women 2 women
The Power of the Purse

**Gold
Sponsors**



Alpine
Veterinary
Hospital

ALLO[®]
FIBER

Gold Sponsor



Jeff Weber, Kristi Rankin, Scott Rankin

Employee Benefits, Retirement,
Home & Auto, Medicare,
Commercial, Health & Life

www.LeadingEdgeFinancialGroup.com

**LEADING EDGE
FINANCIAL GROUP**

970-356-8162

*A holistic approach to your
insurance and financial needs*

Winters, Hughes & Laue, LLC
Attorneys At Law

Bradley D. Laue

**5587 W. 19th Street
Suite 101
Greeley, Colorado 80634**

**Phone: 970-352-4805 x222
Fax: 970-352-6547
blaue@wh-h.com**

Gold Sponsor



uchealth



WELDCOMMUNITY[®]
CREDIT UNION



Gold Sponsor



**THERE'S
ONLY
ONE**

PLACE WHERE
"DREAM BIGGER"
BANK STATEMENT

Proud supporter of
Weld Women 2 Women

 **Bank of
Colorado**

THERE'S ONLY ONE 
MEMBER FDIC

GREELEY 3459 W. 20th St., Ste. 114, 970.378.1800 • 7017 W. 10th St., 970.506.0100



Park Avenue Realty Co. LLC

Proudly supporting Women2Women
Verniece Thomas 970.396.4127

Gold Sponsor

**WHY
W2W**



women 2 women

The Power of the Purse

**Silver
Sponsors**



mixes. gifts. boutique.

YOUR go-to place

- Gift
- Garden
- Food
- Fashion
- Jewelry

happily supporting
women 2 women

-COME SEE US-!
809 10th Street



**Greeley
Interfaith
Association**



RONNEY LAW FIRM

Silver Sponsor



**WOMEN
SUPPORTING
WOMEN.
THAT'S
COMMUNITY.**

Proud sponsor of
the Circle of Sisters
Celebration.

fmsbank.com



Voted best
HVAC for
15 years



McCreeery & Sun
The Finest in Heating and Cooling Since 1974

970-339-5740

www.mccreeeryandsun.com
24 Hour Emergency Service Available
970-339-5740



BENTLEY
Mission Critical



Silver Sponsor



JOSEPH THOMPSON, DDS



**Protection You Can Trust -
For What Matters Most**

From growing your business to protecting your family,
we help you navigate risk with clarity and confidence.

Connect with us today to find coverage tailored to your needs

970.356.0123 | [FloodPeterson.com](https://www.FloodPeterson.com)





Silver Sponsor

THANK YOU!

Thank you to everyone who made today's event a success. We could not do this event without your generosity.

- Alpine Veterinary Clinic and Staff
- Balloon Art by Merry Makers
- Barb and Kay Broderius for the corsages
- Raquel Jandreau, SeneGence Independent Distributor for the lip kits
 - The Make Sense Foundation
- George Slack, Photographer
- June Lemmings, Summer Boyer and Prairie Boyer sponsoring and running the photo booth
- University of Northern Colorado Catering and Event Planning Staff
- Everyone who donated mystery bags, silent auction items, and event supplies

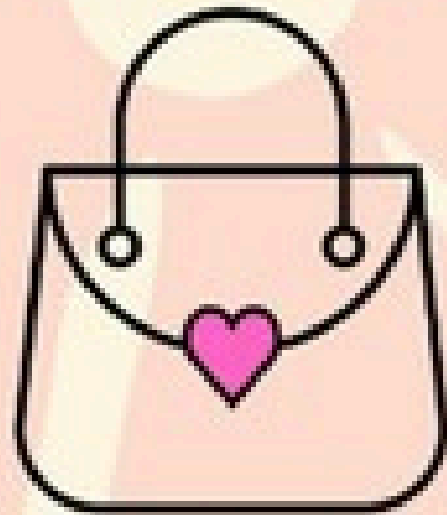
 Kay Broderius for founding Women2Women in 2009

And a very special thank you to all our donors who keep Women2Women thriving so we can continue to offer financial assistance to local women in crisis. 



Follow Women2Women on social media
Facebook: @WeldWomen2Women
Instagram: @weld_w2w

WHY
W2W



women 2 women
The Power of the Purse

THANK YOU FOR ATTENDING!

Women 2 Women is a 501(c)(3) dedicated to providing monetary assistance to women with unexpected and immediate financial needs that cannot be met by other community resources.

Thanks to supporters like you, we've helped over 3,100 local women and their families since May 2009 and put over \$1,600,000 back into our local community.

TO FIND OUT MORE ABOUT
WOMEN2WOMEN
AND DISCOVER WAYS YOU CAN HELP,
VISIT WWW.WELDW2W.ORG

